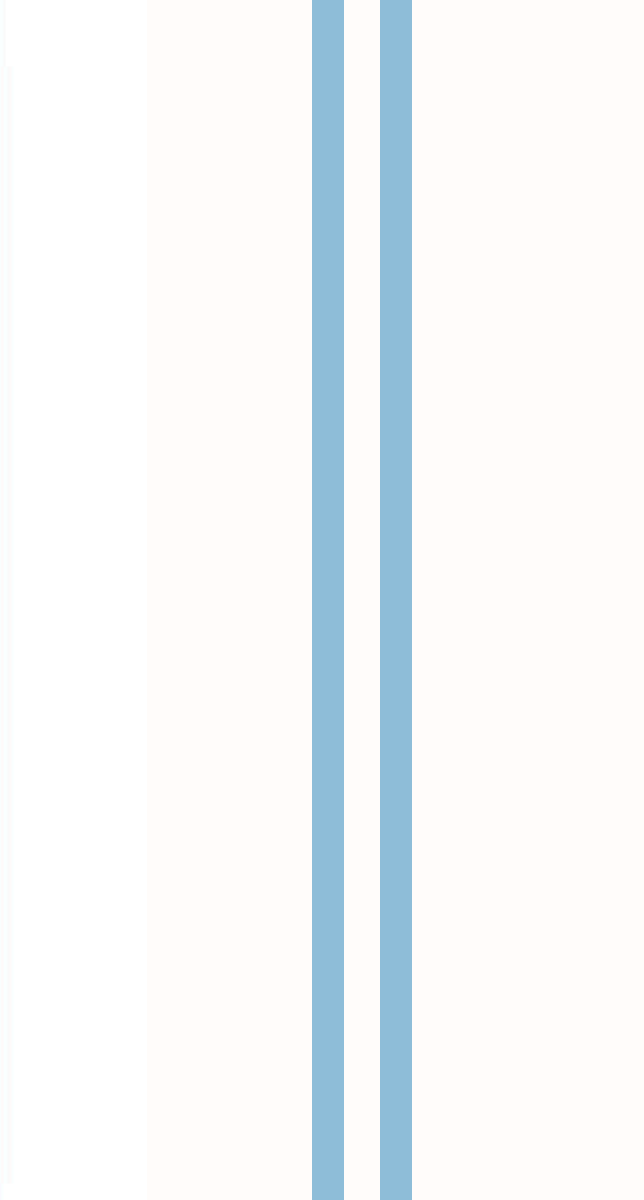
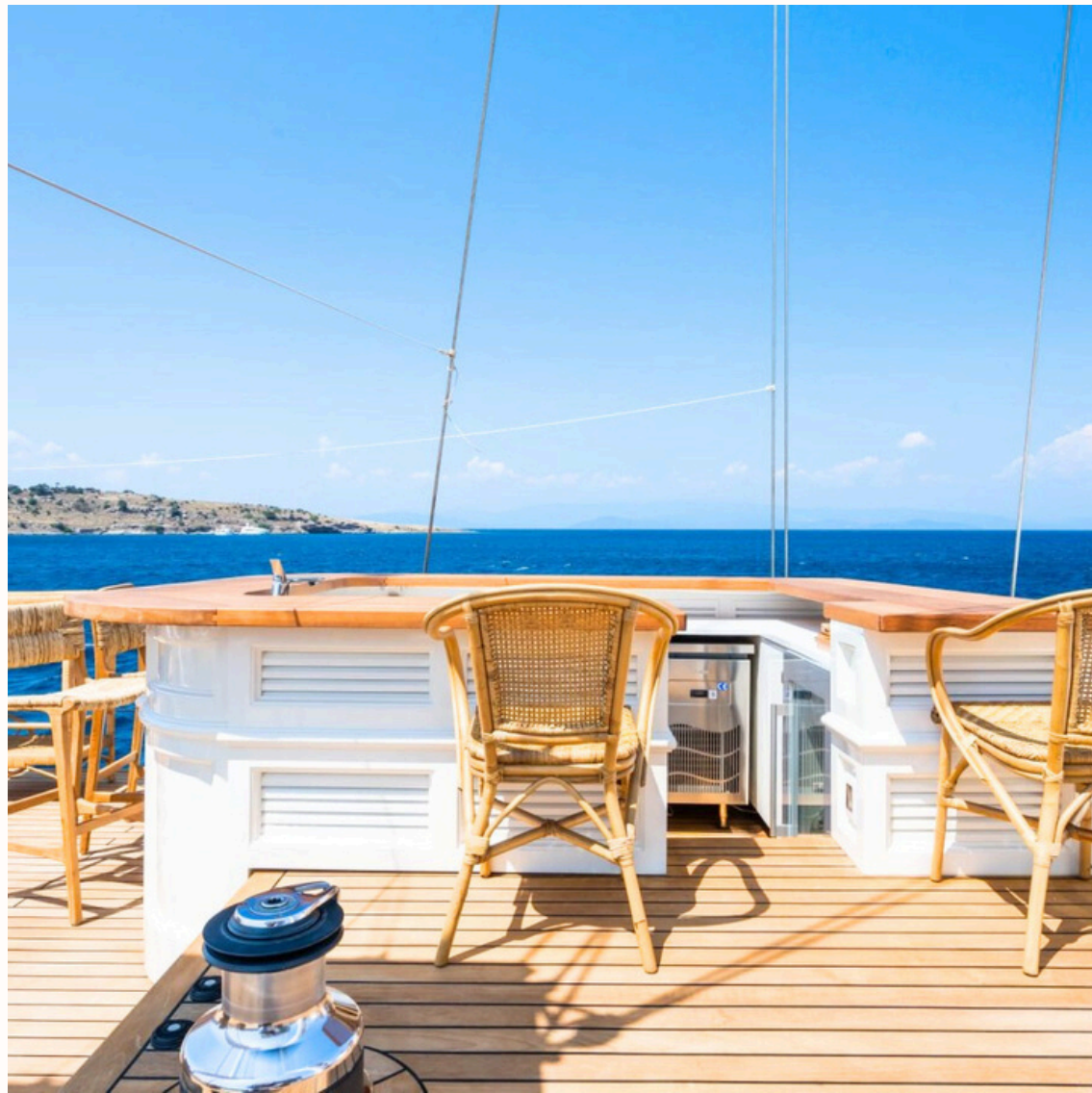
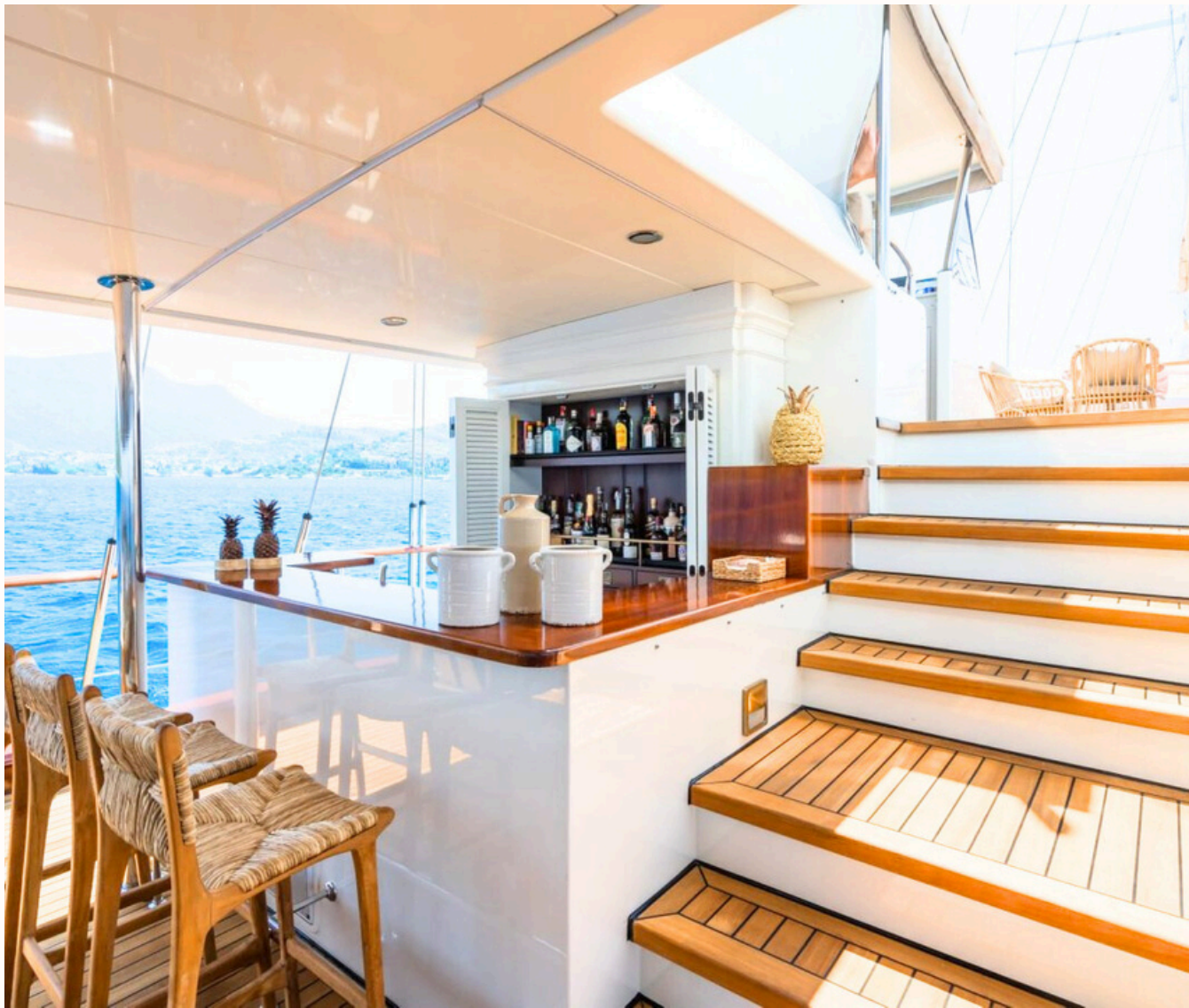




YAZZ

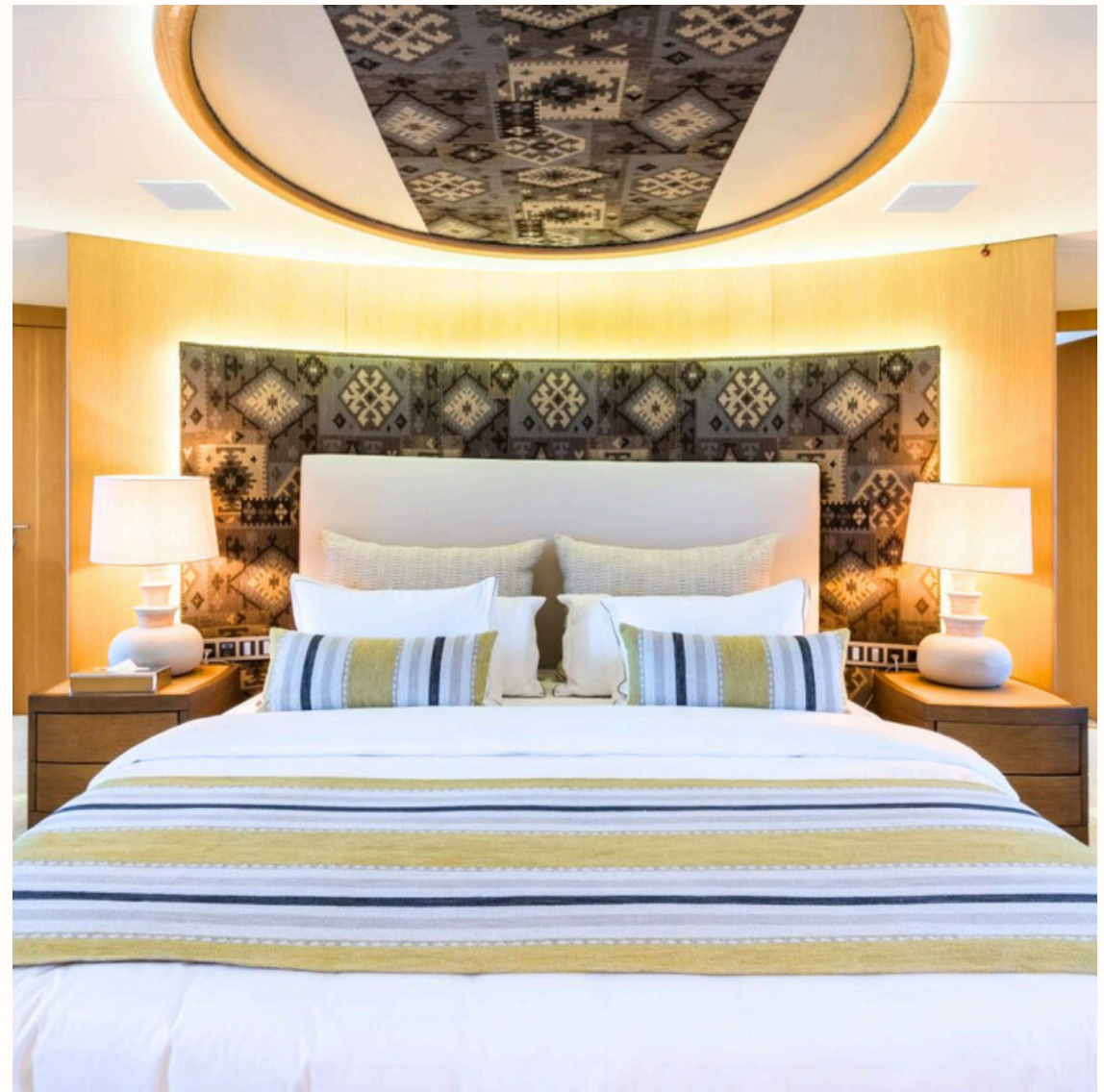
















SPECIFICATIONS

Built/Refit:2007/2023

Crew:12

Length:58m

Beam:10m

Engines & Generators:

2 x 750 hp MAN

2 x 55 kVA Onan

Max speed: 12 knots

Accommodation:

5 cabins for 11 guests (2 Master, 2 Double, 1
Twin)

SPECIFICATIONS

Entertainment:

Pirelli 30, Mercury V8 Verado 2 x 300 hp

Grand 6.50, Mercury 150 hp

Agilis 3.30, Rotax 90 hp

AquaBanas Platform

Sea-Doo GTX 300

2 x F5S

Paddleboard

Wakeboard

Water-ski

2 x Ringo

Pedal

Canoe

Waverunner

Fishing gear

Snorkelling gear

Towables

Inflatable swimming platform

Wifi

TV, DVD & music system in the saloon & all
cabins

Beach Club

Deck Jacuzzi

*This document is not contractual. The yacht's specifications and description are displayed in good faith and whilst believed to be correct are not guaranteed. All yacht details are offered for informational purposes only. Any information about the yacht and its specifications is subject to change without notice.