

# OGUZ KHAN





## **DIMENSION AND PRINCIPAL CHARACTERISTIC OF THE VESSEL:**

LOA (inc. Bow spirit) : 50,50 mt

Length of the hull : 45,00 mt

Beam : 9,83 mt

Draft : 4,16 mt"

No of Guests: 12 People

No of Crew: 10 People

Displacement (Full Loaded): 348 Tonnes

Gross Tonnage: 360 GT

Fuel Capacity : 24.000 lts

Fresh Water Capacity : 7.900 lts

Sprinkler Fresh Water Capacity : 5.900 lts

Waste Water Capacity : 14.800 lts

Engine : Two Baudoin 6M33.2 750 HP 19 Liters Diesel engines

Gen-Set : Two 61,8 kW 85GTC Sole Diesel+ One 19.5 kW 25GTC Sole Diesel

Cruising Speed : 11.3 knots

Maximum Speed : 14 knots

Certification : R.I.N.A Charter Class,C HULL MACH Ych,Unrestricted Navigation,DMS

Flag : Turkish Commercial

# Oguz Khan Teaser





## SOME FEATURES OF THE BOAT

The vessel has 6 cabins, 4 cabin with double bed one cabin with two single beds (convertable to double) and one master cabin with double bed. There are 4 cabins for the crew. Guest cabins located after the engine room and crew cabins located before the engine room.

One the most important and unique feature of the boat you can walk from the back side platform to the forward master cabin directly. There is a corridor in the middle of the boat. This passage is dividing engine room in to two pieces. Engine room is covered by special glasses that can be darkened. The two sides of the engine room can be opened by face recognition system. The corridor can be walked from back enterence door through engine room to the master cabin. One of the other important feature is the classification of the boat. The boat's unrestricted navigation certificate allows us to pass the ocean while the passengers in it. This is a very rare feature for yacht charter industry.

The saloon is 96 square meter and flybridge area over the saloon.



Deck at night



# HULL

The vessel are in complete Rina certification rules. Hull and decks built in steel, A grade 3701 shipbuilding type according to plans and to the Directives and Requirements. Suitable girders are to be used to maintain overall longitudinal strength of the vessel.

All tanks are integrated into the structure, suitable cofferdams are provided and all tanks are provided of appropriate inspection manhole and can be internally coated with appropriate coating in accordance with their use. The hull were designed to have watertight bulkheads located according to Directives and constructed in accordance with the Rina Classification rules.

Particular care were taken over provision of adequate limber and drainage holes in the internal stiffening. Deck stowage lockers were arranged and built into the superstructure where possible, and are to be provided with suitable watertight covers (with locks) and with appropriate drainage arrangements.

Where possible, double continuous weldings are used. Arrangement for examination, for access, and for cleaning and painting were provided for all compartments in "pockets" in the vessel by means of permanent ladders, doors, manholes etc. Battens and ceiling holds, storerooms and other spaces, and protective casings around pipes were made readily removable for this purpose.





## SUPERSTRUCTURE AND HARDTOP

Superstructure and hardtop were built in marine type A grade steel according to plans and to class requirements. Scantlings and the construction arrangement of the superstructure were in accordance with Rina Class directions and Naval Architect indications and were similar with hull construction. Fly bridge front side walls were built by PU panels (Composite). PU panels were covered with fiber and finished with epoxy resin. All around the flybridge covered with glasses, supported with stainless steel stanchions.



## GENERAL OUTFITTING

Chain locker are positively self-stowing for an amount of 220 meters 19 mm diameter chain with stud. Chain pipes made of stainless-steel construction, suitably supported and had well belled mouths at the lower ends. Pipes are positioned to provide even stowage of the chain within the lockers. Anchor hawse pipe are welded stainless steel construction with stainless steel half-round in anchor pockets and at deck level. Polished stainless steel anchor plate were fitted in the shell as per Designer indication. A stainless-steel protection plate fitted on the hull side, flush with the final paint surface.

Adequate size and amount of the scuppers and waterways were concerned for the decks. Main deck scuppers ample size, well run, and adequately positioned when the vessel is at normal trim so as to avoid water collecting on decks.

Rudders of hydrofoil section were constructed of steel according to designer's drawings.



American walnut



Granite



Granite



Wenge parquets

## INTERIOR FURNITURE

There are 6 guest cabins and 4 crew cabins on the boat. Accommodations and common areas were paneled with plywood which has veneer of American walnut, satin finished. Finishes on the walls detailed with aluminium sticks painted to black. In the important technical areas where the ceiling located fast mounts used and can be removed without damaging the furniture. Counter tops in the bathrooms and galley are Granite. For saloon and flybridge countertops Dekton used. Natural Wenge parquets that have been manufactured by the shipyard and are applied for all interior floors. All shower interiors were marble and shower floors are Burmese teak. There is a piano on the saloon.



Marble , Burmese teak

# Saloon





SALOON





MASTER CABIN





MASTER CABIN  
TURKISH BATH AND SHOWER

## SAILS AND RIGGING

As a general guidance, all sail handling gear are manufactured by Antal and mechanically operated where necessary.

Hydraulic Furlers are manufactured by Bamar and fitted Genoa, There are Two Aluminum masts and boom. Our total sail area is. Sail cloths are made by dacron. There are 8 Antal Self tailing hydraulic sail winches fitted. 2 X 90, 6 X80. There will be 2 X 70 electrical and additionally there will be 2\*70 manual winches.Total number of the sail winches are 12.

There are two hydraulic capstan winches Hidromarin brand for mooring ropes.

The masts are custom built Aluminum and manufactured by local mast manufacturer. The rigging mostly made of 1x19 stainless steel wires bluewave brand.

In general, all sail and rigging equipmets consists of brands of Antal, Bamar and Bluewave.

Ropes are Dynema.





## AIR CONDITION AND ACCOMODATION

The vessel is air-conditioned throughout with individual air condition system for each cabin were fitted with Webasto brand. The heating of the vessel is performed by the same system as the air conditioning using warm ducted air controlled by the same individual thermostats in the accommodation spaces as for cooling. Besides the Air condition system there are fresh air and exhaust system on the boat. In addition to the interior air condition system there are air condition under the hardtop, where the dining table located. Total chiller unit capacity is 252.000 btu with three compressor.

# BATHROOM EQUIPMENT

Supply of taps and accessories are:

-Owner and Guest      Hans Grohe

-Crew                      Hans Grohe





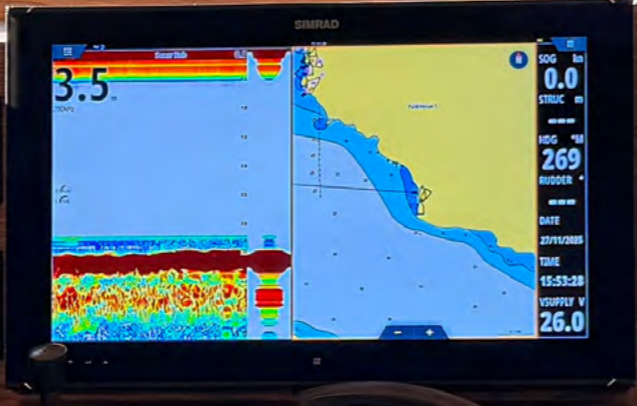
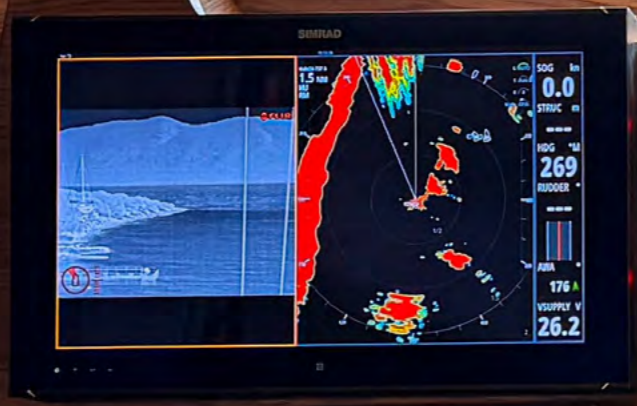
GUEST CABIN  
STARBOARD 1



GUEST CABIN  
STARBOARD 2







## SEA TOYS AND TENDERS

- 1 pcs Highfield SP 5.60mt HYP ARCTIC aluminium base tender with 130 hp Yamaha F130 AETX steering system
- 1 pcs Highfield CL 4.20mt PVC LG aluminium base tender with 60 hp Yamaha HETL steering system
- 2 pcs Kawasaki 310 hp Jetski and parks (Haute)
- 2 pcs F5S model Seabob and parks (Haute)
- 2 pcs Lift foil E4 electrical model and parks (Haute)
- 1 pcs inflatable 10x7,5mt pool Haute brand
- 1 pcs inflatable Waterslide from flybridge to the sea (Haute)
- 4 pcs loungers and 2 umbrellas for sun protection at back platform
- 2 pcs 5Th Wheel brand electrical bicycle









## TAPS / SINKS / TOILETS

Toilets : There is Evac vacuum system for the toilets and toilet brand is Evac.

Master cabin : There is a Turkish bath and steam room. Steampower machine is Hypersteam.

Sink for the kitchen : Stainless steel

Shower Basins : Grilled teak

Sink tables top( counters) :Granite for cabins, dekton for saloon and flybridge

Taps : HansGrohe

Shower Taps : HansGrohe

Shower ceilings : Grilled teak

Deck Shower Tap : 2 in the back swimming platform + 1 for front side additionally there are two showers tap for crew usage. One in the back and one in the front.

## Evac Vacuum System